



**Fernleigh Rise, Ditton, Aylesford, ME20 6BP**  
**Offers Over £400,000**




OFFERED WITH NO ONWARD CHAIN - Beautifully renovated 3 BEDROOM SEMI DETACHED house in Ditton. There has been an abundance of work done to this beautiful home including electrics, boiler heating and windows making the house ready to live in.

Accommodation comprises entrance hall, lounge, downstairs cloakroom, kitchen with separate dining space. To the first floor there are 3 bedrooms and the family bathroom. The light through the whole house and attention to modernisation is stunning in every room.

Externally the property offers a driveway for multiple cars and has great views over to the North Downs as the house has a prestigious plot on the top of the hill. The garden is particularly large and is a great space with patio area and lawn and access to a garage.

We recommend viewing this family home to avoid disappointment. Please contact us for full information of improvements and renovations made to this home.

- Modern 3 Bedroom House
- Semi Detached Spacious Plot
- Three Bedrooms
- Modernised Throughout
- Good Size Driveway
- Fabulous Rear Garden (Approx. 119ft)
- Popular & Convenient Location
- NO ONWARD CHAIN
- EPC Rating C

Energy Efficiency Rating		
	Current	Potential
<i>Very energy efficient - lower running costs</i>		
(92 plus) <b>A</b>		
(81-91) <b>B</b>		
(69-80) <b>C</b>	72	78
(55-68) <b>D</b>		
(39-54) <b>E</b>		
(21-38) <b>F</b>		
(1-20) <b>G</b>		
<i>Not energy efficient - higher running costs</i>		
<b>England &amp; Wales</b>	EU Directive 2002/91/EC 	





### LOCAL AREA INFORMATION FOR DITTON

Ditton is a large village in the borough of Tonbridge & Malling. The village is ideally located for ease of access to motorways and local amenities. Maidstone is 4.6 miles away and West Malling just 1.8 miles. West Malling is one of the most attractive small towns in Kent with a variety of shops, amenities and eateries.

For recreation you have a local leisure centre at Larkfield, many parks, green spaces and countryside close by. Leybourne Lakes and Manor Park are particularly noteworthy.

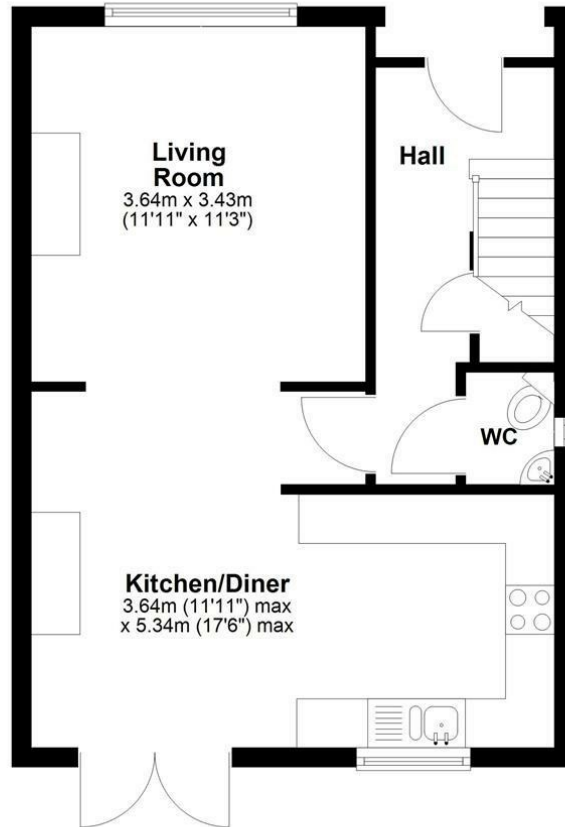
For education there is a comprehensive range of primary, grammar and private educational opportunities all within easy reach. For more schools information please visit [www.kent-pages.co.uk/education](http://www.kent-pages.co.uk/education) or ask for a Page & Wells Key Facts for Buyers Guides.

### ADDITIONAL INFORMATION

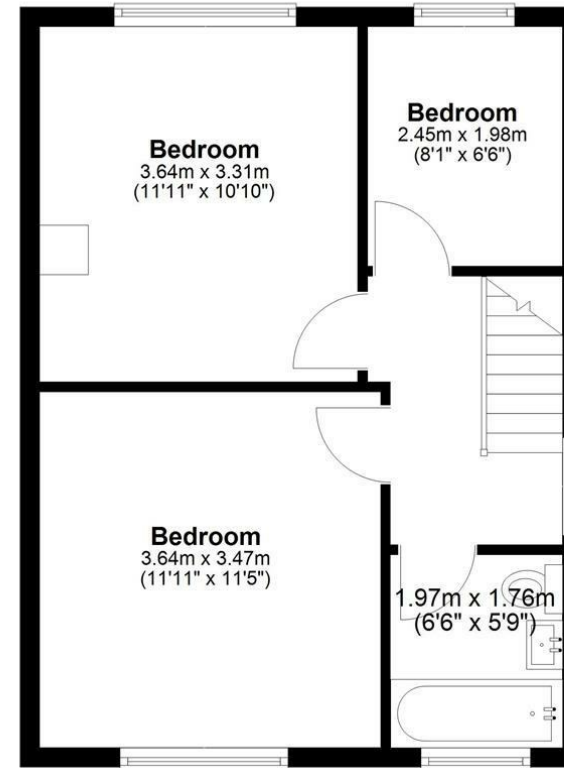
Freehold House  
Council Tax Band D  
Renovated Throughout  
EPC Rating C  
Contact For More Information



### Ground Floor



### First Floor



Total area: approx. 78.3 sq. metres (842.8 sq. feet)

Page & Wells limited for themselves and for the vendors of this property whose agents they are give notice that: 1. These particulars do not constitute any part of, an offer or a contract. 2. All statements contained in these particulars as to this property are made without responsibility on the part of Page & Wells Limited or the Vendor. 3. None of the statements contained in these particulars as to the property is to be relied on as statements or representations of fact. 4. Any intending purchaser must satisfy himself by inspection or otherwise as to the correctness of each of the statements contained in these particulars. 5. The vendor does not make or give, and neither Page & Wells Limited nor any person in their employment has any authority to make or give any representation whatsoever in relation to this property. These particulars are supplied on the understanding that all negotiations are carried out throughout Page & Wells Limited. Properties with a reference prefixes EAA are those which Page & Wells Limited disclose an interest in accordance with the provisions of the Estates Agents Act 1979

